

Appendix 4

Supplemental Figures

This appendix presents additional results that further clarify trends cited in the main manuscript, but are not integral to the central argument.

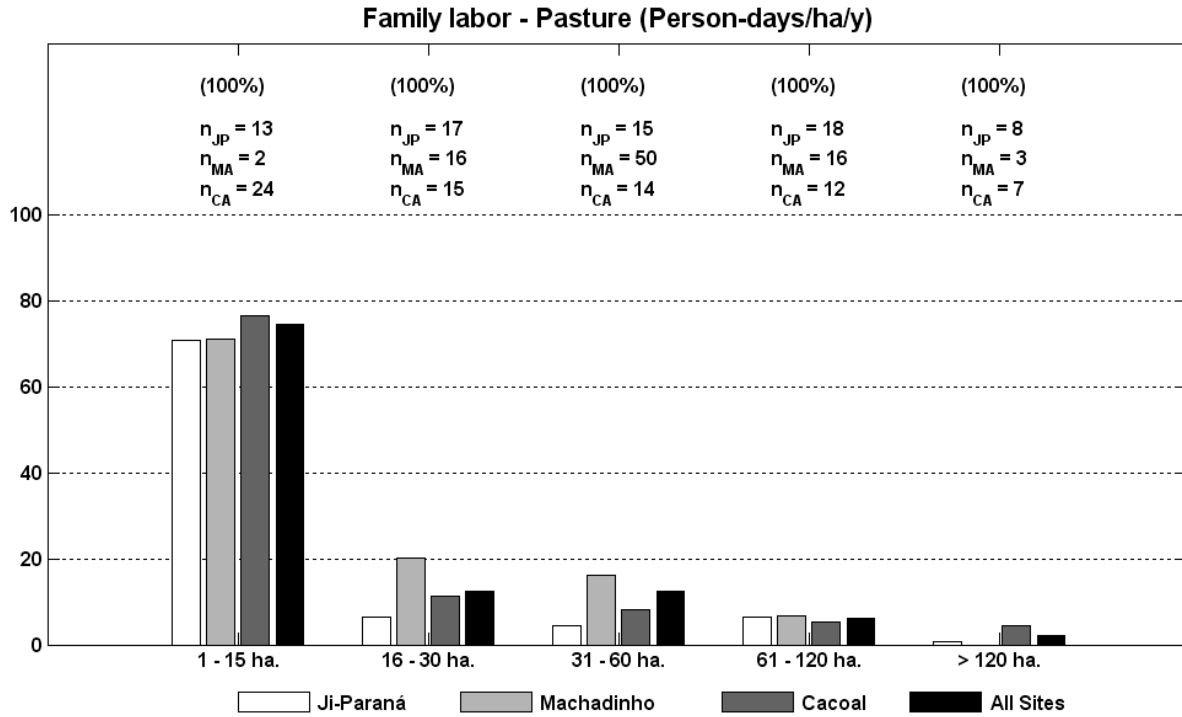


Figure A4.1: Family labor use for pasture. Percent refers to the percent of surveys in each size class used to generate bars; n_{JP} , n_{MA} , and n_{CA} are the number of surveys used from each of Ji-Paraná, Machadinho, and Cacoal, respectively.

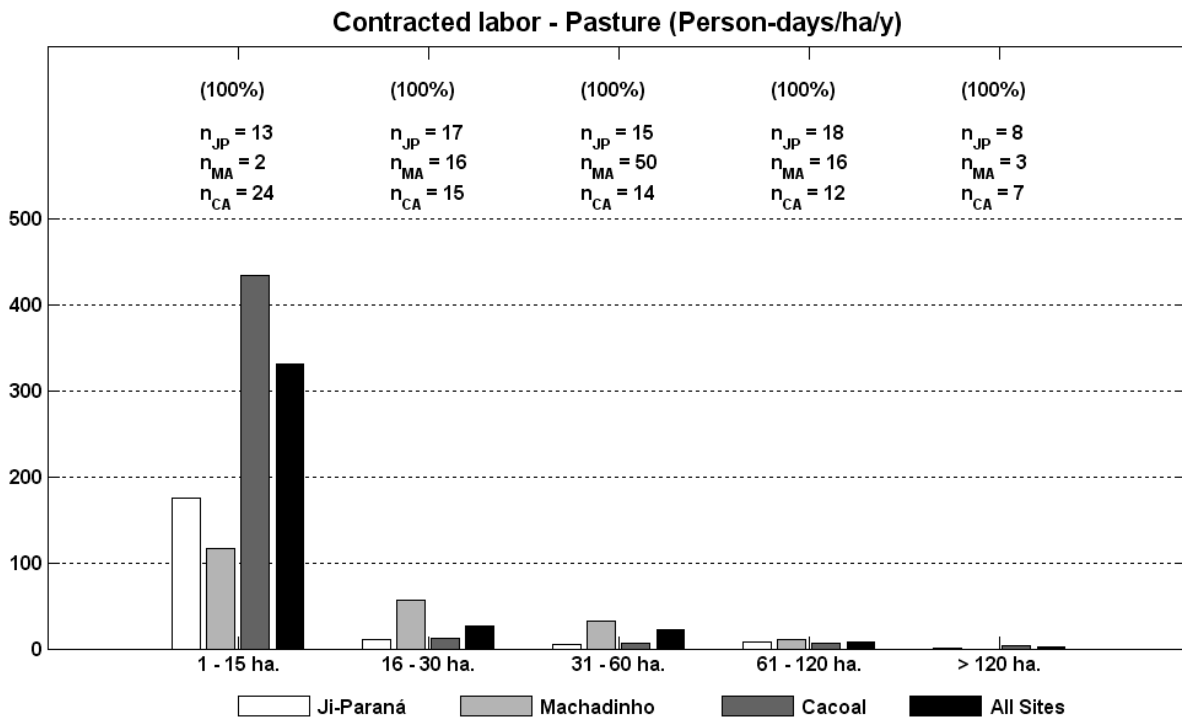


Figure A4.2: Contracted labor use for pasture. Percent refers to the percent of surveys in each size class used to generate bars; n_{JP} , n_{MA} , and n_{CA} are the number of surveys used from each of Ji-Paraná, Machadinho, and Cacoal, respectively.

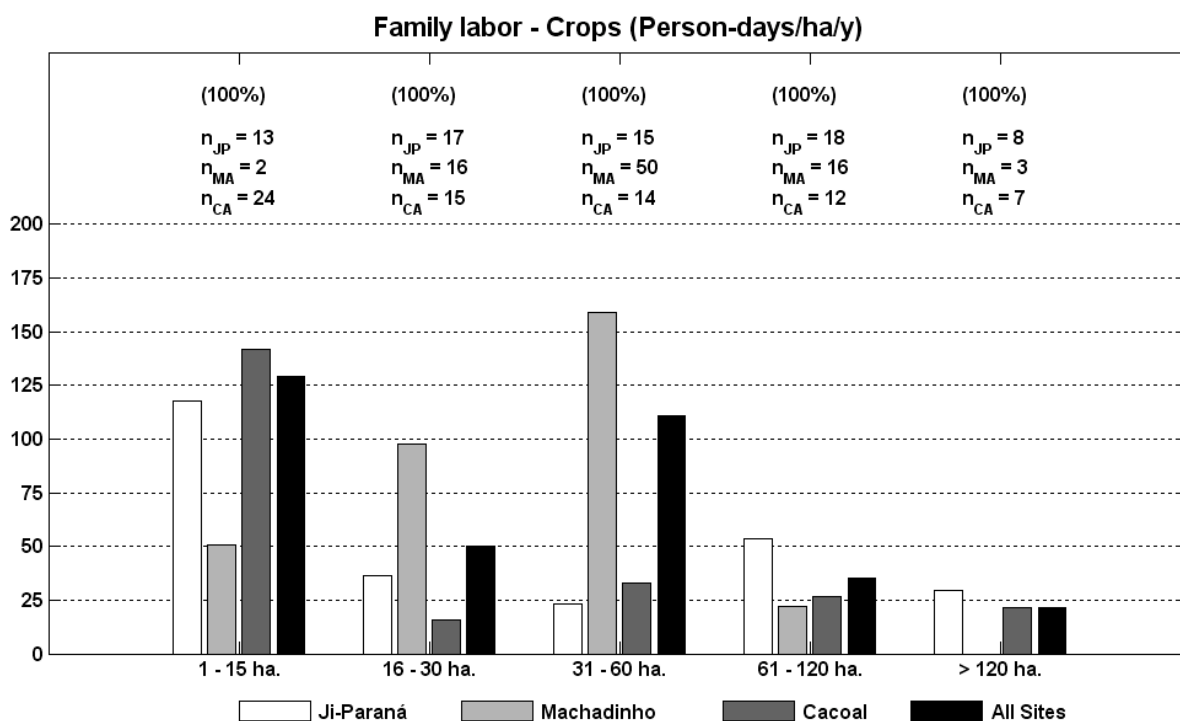


Figure A4.3: Family labor use for cropland. Percent refers to the percent of surveys in each size class used to generate bars; n_{JP} , n_{MA} , and n_{CA} are the number of surveys used from each of Ji-Paraná, Machadinho, and Cacoal, respectively.

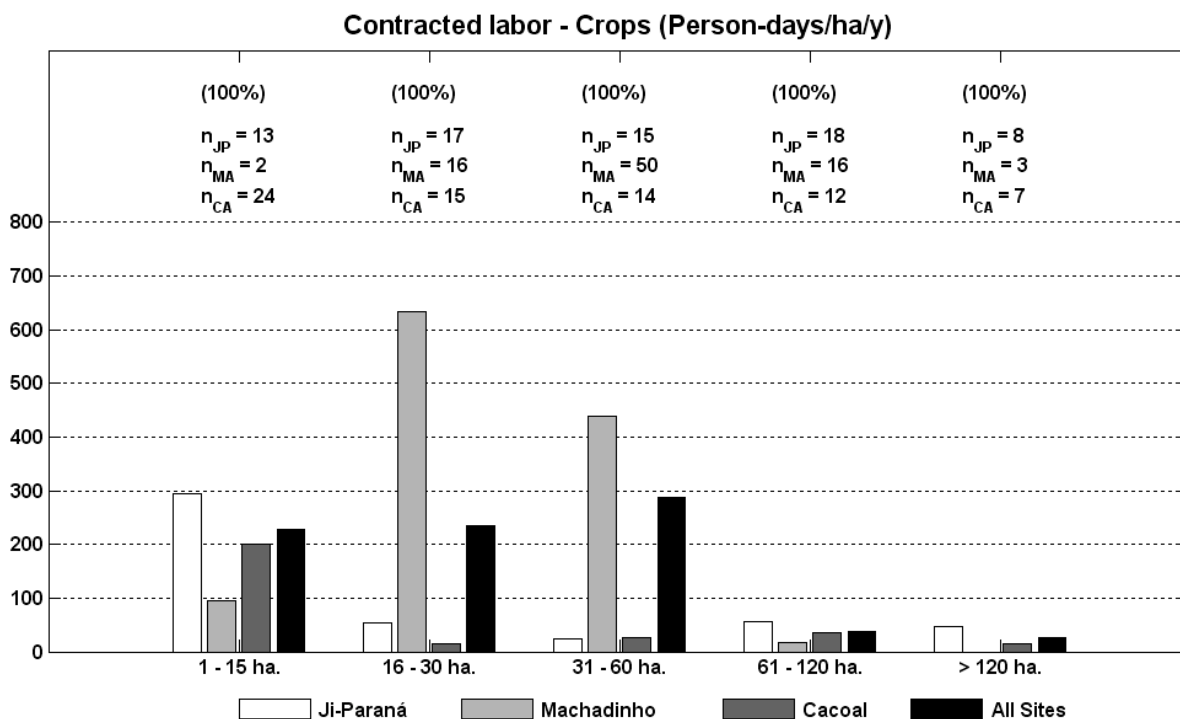


Figure A4.4: Contracted labor for cropland. Percent refers to the percent of surveys in each size class used to generate bars; n_{JP} , n_{MA} , and n_{CA} are the number of surveys used from each of Ji-Paraná, Machadinho, and Cacoal, respectively.

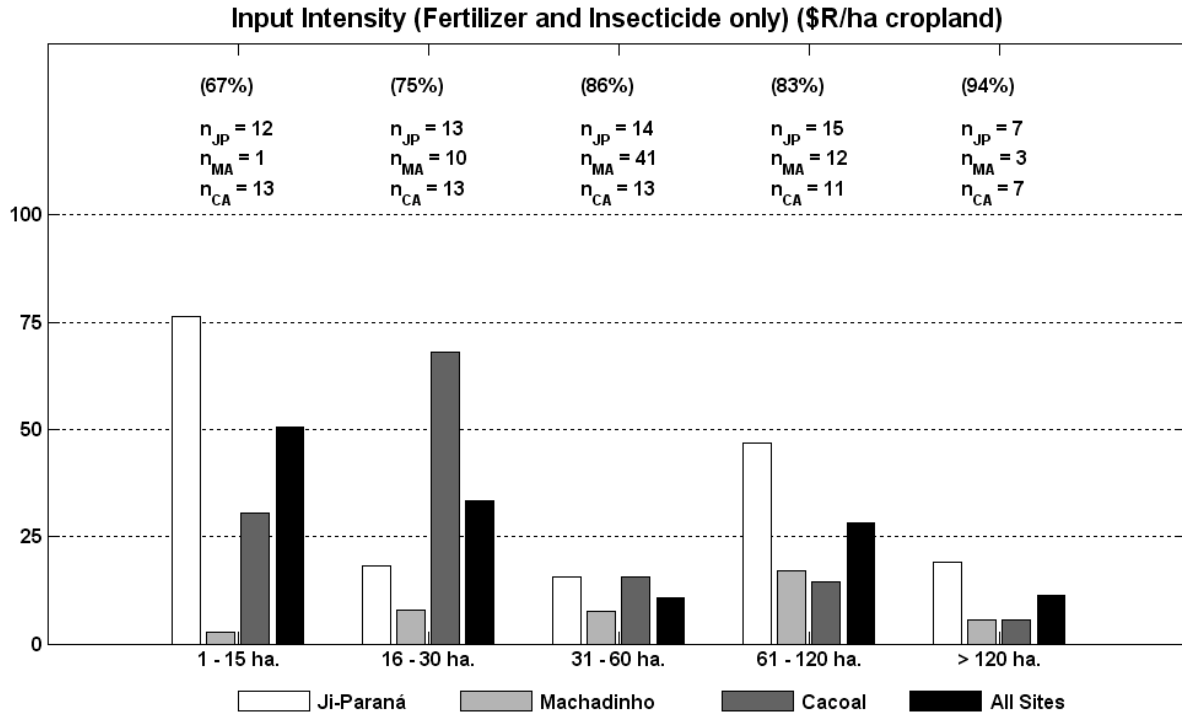


Figure A4.5: Input intensity (fertilizer and insecticide) per hectare of cropland. Percent refers to the percent of surveys in each size class used to generate bars; n_{JP} , n_{MA} , and n_{CA} are the number of surveys used from each of Ji-Paraná, Machadinho, and Cacoal, respectively.

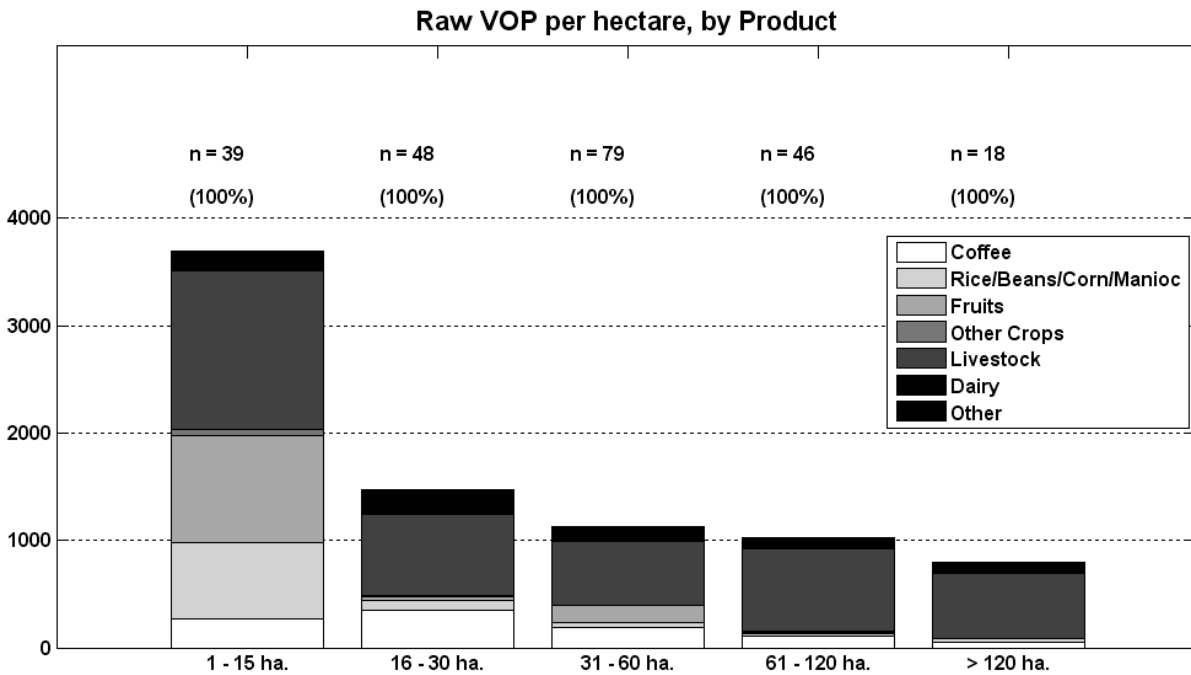


Figure A4.6: Raw VOP per hectare across entire sample, broken down by product. Percent refers to the percent of surveys in each size class used to generate bars; n is the number of surveys used.

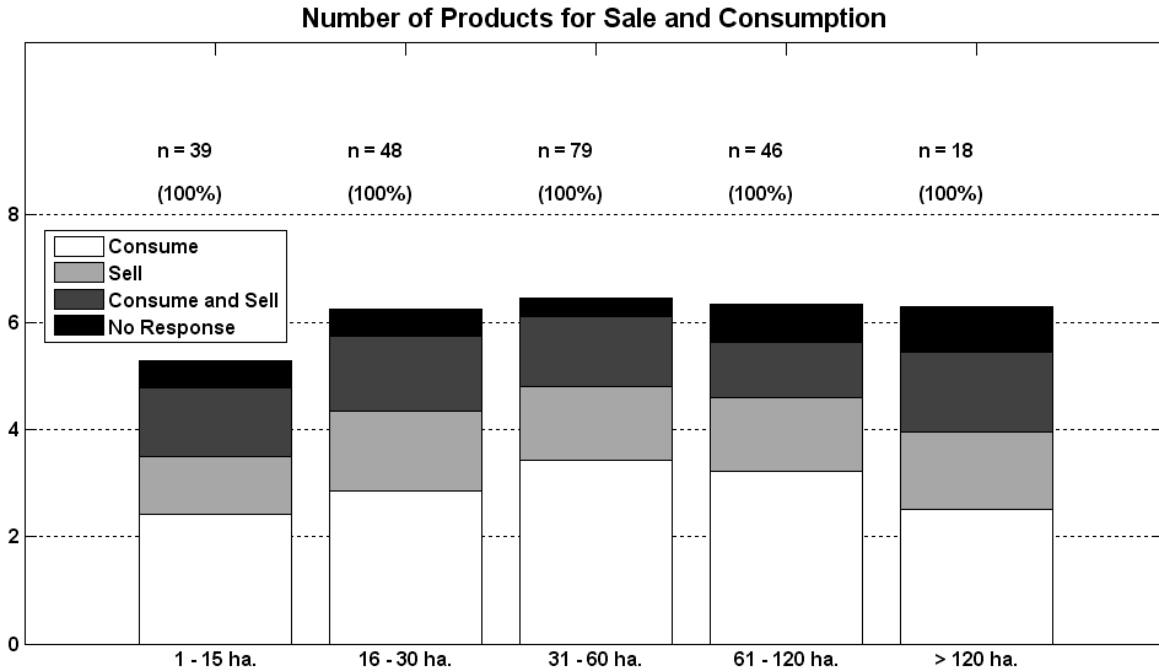


Figure A4.7: Number of unique products grown on farms for sale and/or consumption. Percent refers to the percent of surveys in each size class used to generate bars; n is the number of surveys used.

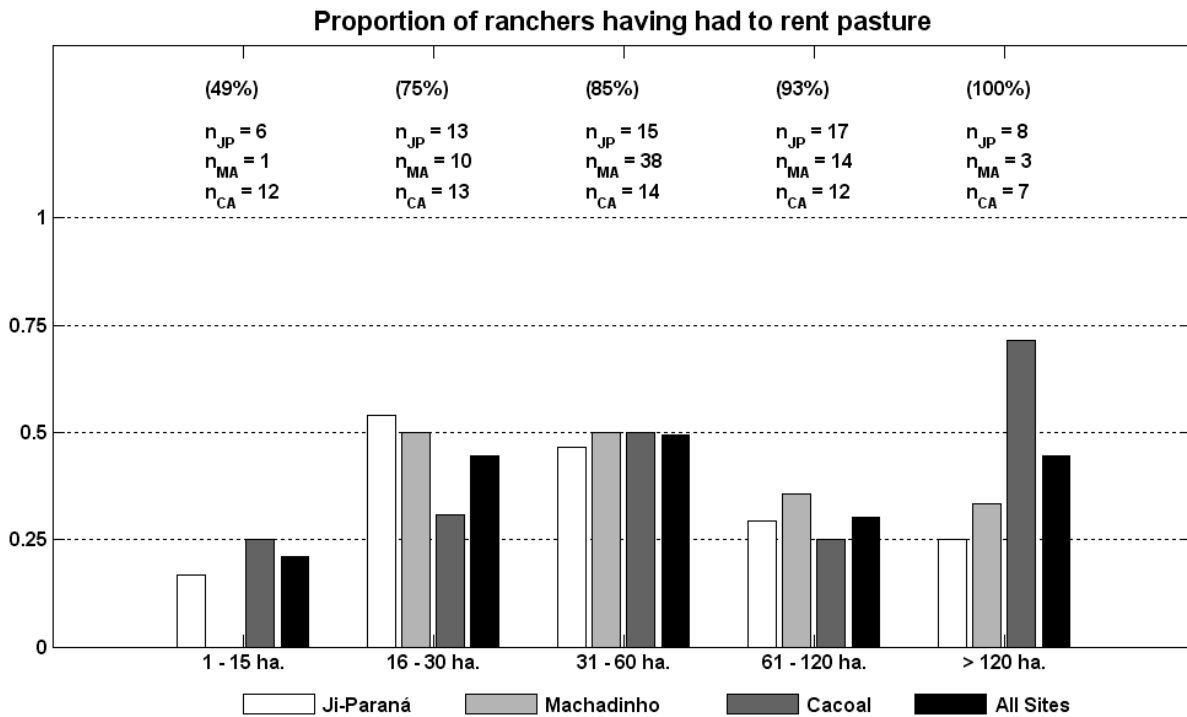


Figure A4.8: Proportion of ranchers having had to rent pasture. Percent refers to the percent of surveys in each size class used to generate bars; n_{JP}, n_{MA}, and n_{CA} are the number of surveys used from each of Ji-Paraná, Machadinho, and Cacoal, respectively.